

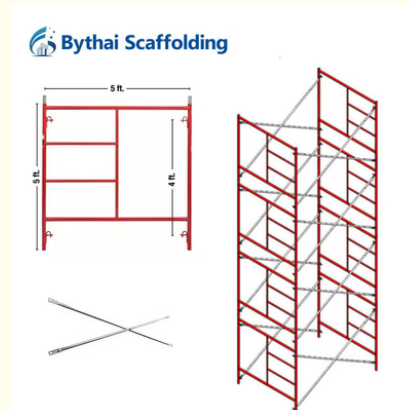
## Building Materials H Type Steel Rolling V Lock Powder Coated Mason Frame Scaffolding

Our Product Introduction

for more products please visit us on [bythaiscaffold.com](http://bythaiscaffold.com)

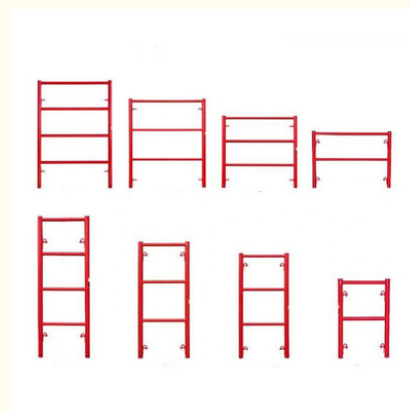
### Basic Information

- Place of Origin: China
- Brand Name: Bythai
- Certification: SGS
- Model Number: BT04
- Minimum Order Quantity: 1000pcs
- Price: 18.9-28.9
- Packaging Details: Bundle
- Delivery Time: 15-30 Working Days
- Payment Terms: L/C, T/T
- Supply Ability: 5000t/Month

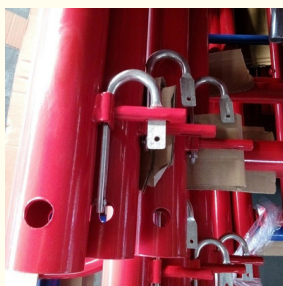


### Product Specification

- Features: Easy To Assemble And Disassemble
- Stability: High
- Surface Treatment: Powder Coating
- Safety: High
- Durability: Long-lasting And Sturdy
- Weight: Lightweight
- Load Capacity: 1000kg
- Material: Steel
- Size: Various Sizes Available
- Component: Frame, Joint Pin, Base Plate, Screw Jack, Etc.
- Easy Installation: Yes
- Usage: Indoor/Outdoor
- Versatility: Can Be Used For Various Types Of Scaffolding Structures



### More Images



## Product Description

### Product Description:

Introducing our Building Materials H Type Steel Rolling V Lock Powder Coated Mason Frame Scaffolding, the perfect solution for your construction needs. This robust scaffolding system is engineered from high-quality H-type steel, ensuring exceptional strength and stability for various construction projects. The innovative V lock design allows for quick assembly and secure connections, while the powder coating offers enhanced corrosion resistance, extending the lifespan of the scaffolding. Ideal for both residential and commercial applications, this versatile frame provides safety and efficiency on-site. Elevate your construction process with our reliable scaffolding solution, designed to meet industry standards and support your project's success.

### Features:

**Product Name:** Frame System Scaffolding  
**Surface Treatment:** Powder Coating  
**Reusability:** Yes  
**Safety:** High  
**Flexibility:** High  
**Color:** Steel, Painted Color  
**Ladder Frame:** Yes, for Frame System Structuring

### Technical Parameters:

name	Size(W*H)	Materials	surface
Walk Through Frame	4*5'7"(1219*1700mm)	Q195 /Q235/Q355B	Powder Coated
	5*6'4"(1524*1930mm)		
	5*4'(1524*1219mm)		
	5*6'4"(1524*1930mm)		
	5*6'7"(1524*2007mm)		



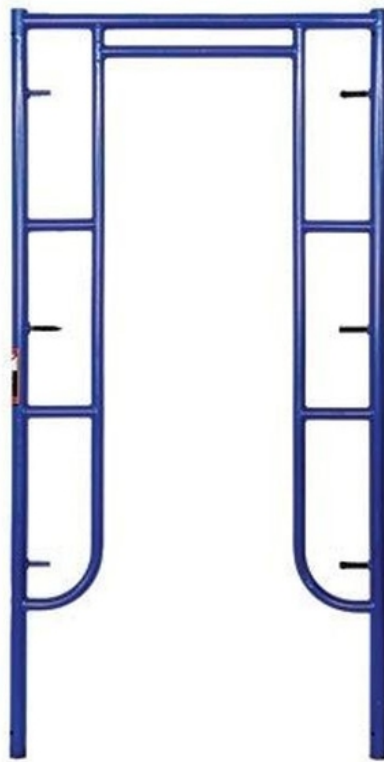
Bythai Scaffolding











### Applications:

#### Bythai BT04 Frame System Scaffolding

Bythai BT04 Frame System Scaffolding is a perfect combination of h frame and ladder frame structures that offer an efficient and cost-effective solution for construction projects. It features a high load-bearing capacity, high durability, excellent safety, and reusability. In addition, it is highly cost-effective, making it the perfect choice for applications such as scaffolding, formworks, and temporary structures.

These features make Bythai BT04 Frame System Scaffolding the ideal choice for any construction project, as it ensures that the job is done efficiently, safely, and with minimal cost. The high load capacity, durability, and safety of the frame system make it ideal for any kind of scaffolding, formwork, or temporary structure, while the reusability ensures that the product can be used for multiple projects.

Bythai BT04 Frame System Scaffolding is the ideal choice for any construction project due to its high load capacity, durability, safety, reusability, and cost-effectiveness. With this product, you can be sure that your construction project will be completed efficiently, safely, and cost-effectively.

### Customization:

#### Bythai BT04 Scaffold Mobile Frame System

This scaffold mobile frame system is made from high-quality materials, offering you superior durability and stability. It is lightweight, making it easy to move and transport. It is also cost-effective and can be customized to fit your needs. The Bythai BT04 Scaffold System is an excellent walk-through scaffold system that provides maximum safety and efficiency.

### Support and Services:

We provide technical support and services for Frame System Scaffolding. Our technical support team has a range of experts who are available to answer any questions you may have about the product. We also provide ongoing maintenance and monitoring services to ensure the system is running optimally. Our team is trained in the latest technologies and can provide custom solutions to any issues you may have. We strive to provide the best customer service and support to our customers so that they can have the best experience with our product.



**Bythai Scaffolding Co.,Ltd**



17300780862



info@bythaiscaffolding.com



bythaiscaffold.com

No. 605,Industrail Exchange Center ,Huanghua Town Changsha Hunan China