

## Customized Scaffolding Ringlock Standard 0.5-3M Q355 48.3\*3.2mm Hot-dip Galvanized for Construction

Our Product Introduction

for more products please visit us on [bythaiscaffold.com](http://bythaiscaffold.com)

### Basic Information

- Place of Origin: China
- Brand Name: Bythai
- Certification: SGS
- Model Number: BS1703
- Delivery Time: 10-15 working days
- Payment Terms: T/T

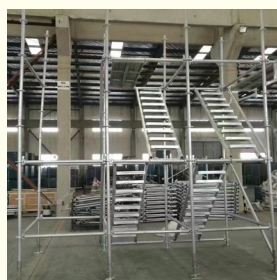


### Product Specification

- Features: Easy Assembly, High Strength, Versatile, Durable
- Loading Capacity: Up To 20kN
- Joints: Double-locking
- Vertical Load Capacity:  $\geq 45\text{KN}$
- Tube Thickness: 3.25mm/3.0mm
- Materials: Q195, Q235, Q355B
- Vertical Standard Length: 0.5m/1.0m/1.5m/2.0m/2.5m/3.0m
- Assembly Type: Quick And Easy
- Warranty: 2 Years
- Durability: High
- Load Capacity: Up To 20kN
- Assembly Method: Quick And Easy



### More Images



## Product Description

### Features

**Customizable Lengths:** Choose from lengths ranging from 0.5 meters to 3 meters to perfectly suit your project requirements.

**Heavy-Duty Q355 Steel:** Experience superior strength and durability with Q355 grade steel, ideal for supporting demanding loads.

**Hot-Dip Galvanized Finish:** The zinc coating provides exceptional corrosion resistance, ensuring long-lasting performance even in harsh weather conditions.

**Secure Ringlock System:** The integrated ringlock connection points allow for fast, secure, and wobble-free assembly of your scaffolding structure.

**Versatile Applications:** Suitable for constructing a variety of scaffolding configurations, from simple platforms to complex multi-story structures.

**Enhanced Project Flexibility:** Customizable lengths allow for tailored scaffolding configurations to suit any project.

**Superior Load Capacity:** High-strength Q355 steel ensures safe working environments even with heavy loads.

**Long-Lasting Durability:** Hot-dip galvanized finish protects against rust and corrosion for years of reliable use.

**Fast and Efficient Assembly:** The ringlock system simplifies construction and minimizes setup time.

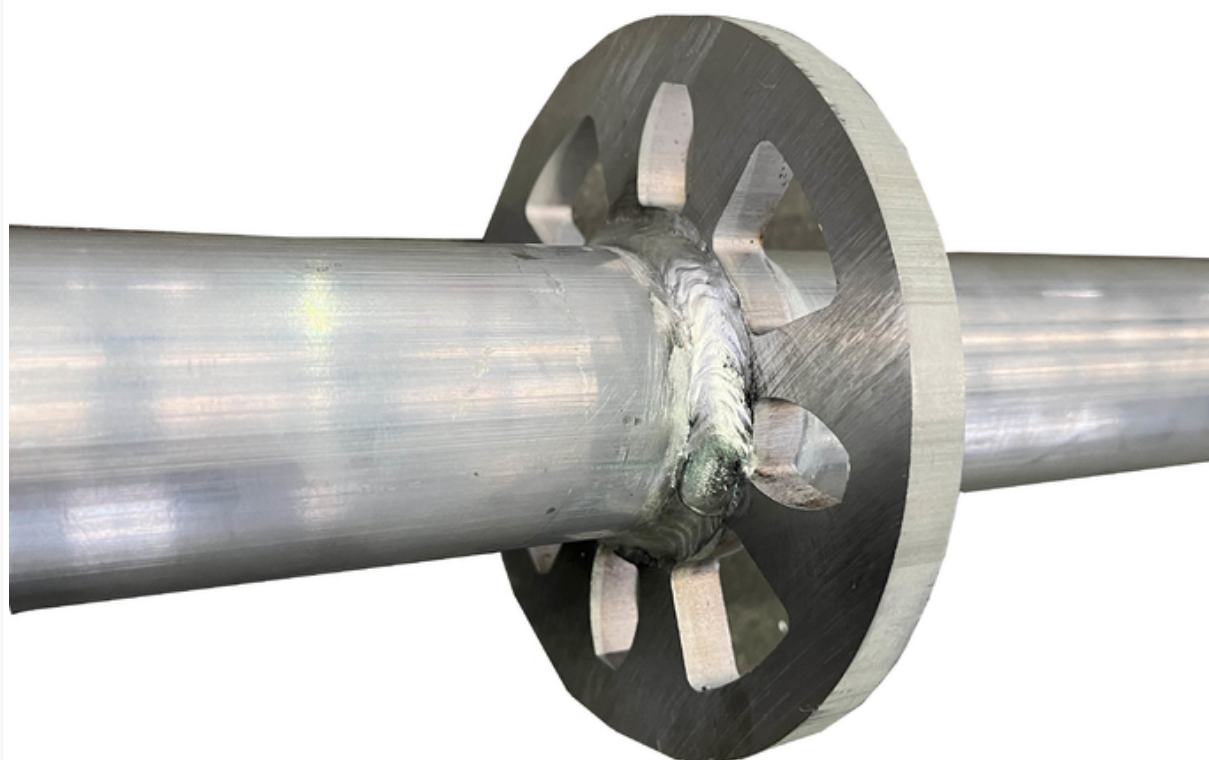
**Reduced Maintenance Costs:** The galvanized finish minimizes maintenance requirements.

### Specifications

Specification	Thickness(mm)	Length(mm)	surface	Weight(kg)
M48	3.25	500	HDG	2.56
M48	3.25	1000	HDG	4.99
M48	3.25	1500	HDG	7.45
M48	3.25	2000	HDG	9.95
M48	3.25	2500	HDG	12.43
M48	3.25	3000	DHG	14.84

### Product Detail Images

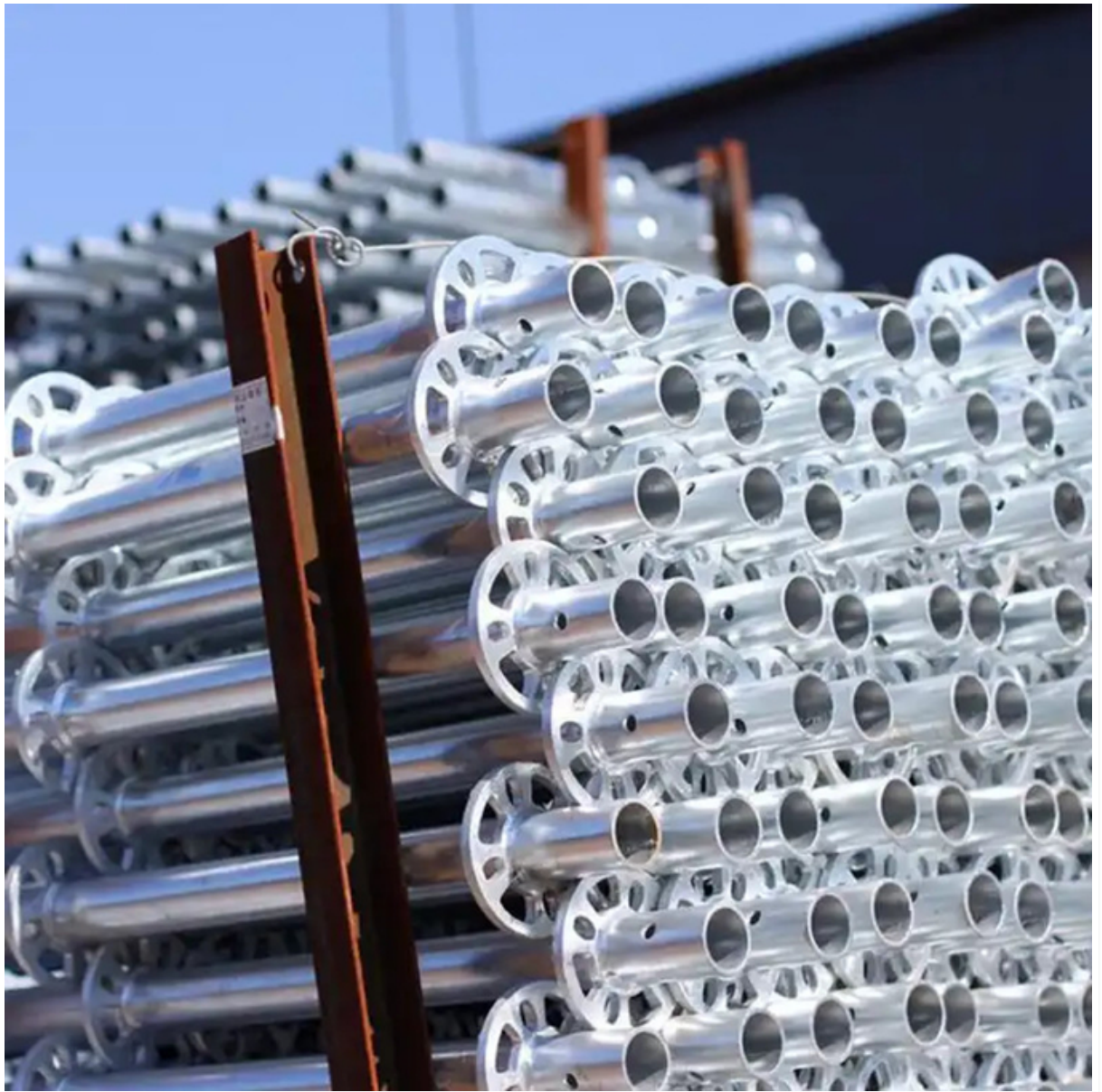








**Bulk Production in Warehouse**









## Certificates





## Why Choose Us

When choosing Bythai Scaffolding for your scaffolding needs, you benefit from over a decade of industry experience and specialized knowledge that streamlines communication and ensures efficient project execution. We offer customizable solutions tailored to meet your exact specifications, backed by our strict adherence to international, national, and local safety standards. Our commitment to safety is unwavering, guaranteeing compliance with all regulations for every scaffolding operation. Enjoy the advantage of factory-direct pricing with no additional service fees, providing cost-effective solutions without compromising on quality. Our dedication to superior customer service means you receive attentive support throughout your project, ensuring a seamless experience from start to finish.

## FAQ

### General Questions

Q: What types of scaffolding systems do you manufacture?

A: We produce a variety of steel & Aluminum scaffolding systems, including scaffolding tubes and couplers, Ringlock, Frame, and Props Systems. Scaffolding accessories like planks, ring-lock standard, Ledger, Diagonal, and Screw are also supplied.

Q: Where are your products manufactured?

A: All our products are manufactured in our factory located in China.

Q: Do you offer custom scaffolding solutions?

A: Yes, we provide customized scaffolding solutions to meet specific project requirements.

Q: Why should we buy from you not from other suppliers?

A: We have a group of staff and a technical team with rich scaffolding experience, we have many years of engineering site visits and exchange experience, professionally to provide customers with all kinds of scaffolding consultation and program recommendations.

Q: What successful scaffolding project experience does your company have?

A: We have been involved in many successful projects over the past three years including multi-story buildings, bridge projects, and more. Please refer to our project case page for specific cases.

### Product Information

Q: What materials are your scaffolding products made of?

A: Our scaffolding products are made from high-quality materials such as aluminum and steel.

Q: Are your scaffolding systems compliant with international standards?

A: Yes, our scaffolding systems comply with international standards such as BS1139, EN39, and STK400, STK500.

Q: What is the load capacity of your scaffolding systems?

A: The load capacity varies by system, we need to set it up for testing. Please contact our sales team for more details.

### Ordering & Pricing

Q: How can I place an order?

A: Orders can be placed by contacting our sales team via email or phone. You can also request a quote through our website.

Q: Do you offer factory prices?

A: Yes, we offer competitive factory prices to ensure cost-effectiveness for our clients.

Q: Is there a minimum order quantity?

A: The minimum order quantity depends on the specific product. Please contact our sales team for more details.

Q: Do you provide discounts for bulk orders?

A: Yes, we offer discounts for bulk orders. Please contact us for a detailed quotation.

### Shipping & Delivery

Q: Do you ship internationally?

A: Yes, we ship our products worldwide, with a focus on South America, North America, South Asia, and the Middle East.

Q: How long does it take to deliver an order?

A: Delivery times vary depending on the destination and order size. Generally, it takes between 2-6 weeks.

Q: What shipping methods do you use?

A: We use various shipping methods including sea freight, air freight, train, and express courier services.

#### **After-Sales Support**

Q: What kind of after-sales support do you offer?

A: We offer comprehensive after-sales support including installation guidance, maintenance advice, and technical support.

Q: Do you provide warranties on your products?

A: Yes, we offer warranties on our products. The warranty period varies by product.

Q: How can I get technical support?

A: Technical support can be accessed by contacting our support team via email or phone.

#### **Quality Assurance**

Q: How do you ensure the quality of your products?

A: We have strict quality control measures in place, including rigorous testing and inspections at various stages of production.

Q: Can I visit your factory for an inspection?

A: Yes, we welcome factory visits. Please contact us to schedule an appointment.

Q: Do you have any certifications for your products?

A: Yes, our products are certified to meet various international standards.

#### **Safety & Regulations**

Q: Are your scaffolding systems safe to use?

A: Yes, our scaffolding systems are designed with safety as a top priority and meet all relevant safety regulations.

Q: What safety precautions should be taken when using your scaffolding?

A: Safety precautions include proper assembly, regular inspections, and adherence to safety guidelines and regulations.



**Bythai Scaffolding Co.,Ltd**



17300780862



info@bythaiscaffolding.com



bythaiscaffold.com

No. 605,Industrail Exchange Center ,Huanghua Town Changsha Hunan China