

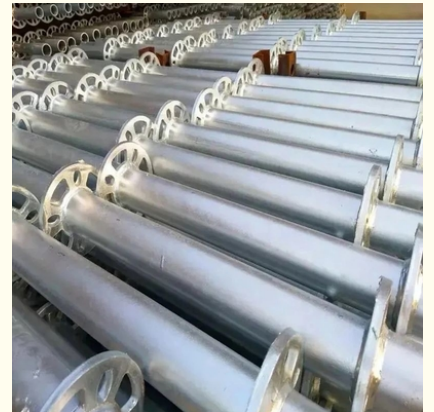
China Scaffolding Factory Q235 Q355 Standard Ringlock Scaffolding For Sale

Our Product Introduction

for more products please visit us on bythaiscaffold.com

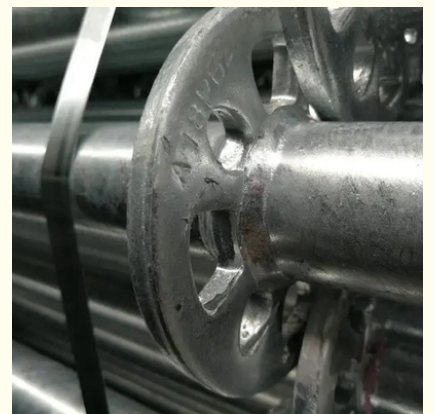
Basic Information

- Place of Origin: China
- Brand Name: Bythai
- Model Number: BT2461
- Delivery Time: 10-15



Product Specification

- Warranty: 2 Years
- Product Name: Ringlock System
- Material: Q235 Steel
- Surface Treatment: Hot-dip Galvanized
- Application Scenarios: Architecture
- Shipping Origin: China
- Standard: EN12810/BS1139
- Load Capacity: 20kN
- Oem Service: Available
- Assembly Type: Quick Locking
- Horizontal Adjustment: $\leq \pm 3^\circ$
- Tube Thickness: 3.2mm
- Vertical Adjustment: $< +3^\circ$



More Images



Product Description

China Scaffolding Factory: High-Quality Q235 & Q355 Standard Ringlock Scaffolding for Sale

Features:

Unmatched Strength & Durability: Q235 & Q355 Ringlock Scaffolding Solutions

Our China factory offers a comprehensive selection of ring lock scaffolding systems, catering to diverse project needs:

Q235 Steel: Ideal for projects requiring a balance between cost-effectiveness and strength, Q235 steel provides a reliable scaffolding solution.

Q355 Steel: For heavy-duty construction projects demanding exceptional load-bearing capacity, our Q355 steel ringlock scaffolding offers the perfect solution.

Built to Last: The Ringlock Advantage

Robust Ringlock Connection System: Ensures a secure and stable platform for workers, prioritizing safety and compliance with industry regulations.

Hot-Dip Galvanized Finish (Optional): Provides enhanced corrosion resistance, extending the lifespan of the scaffolding and minimizing maintenance costs.

Tailored Solutions for Every Project:

Adjustable Components: Verticals and diagonals adjust to various heights and configurations, guaranteeing maximum versatility for your project.

Modular Design: Seamless expansion and reconfiguration of the scaffolding system cater to diverse project requirements.

Specification:

Ringlock System Scaffolding

The Ringlock System Scaffolding is a revolutionary support system for construction projects. Made of high quality Q235 Steel and hot-dip galvanized for durability, it is the perfect choice for any construction site.

Material: Q235 Steel

The Ringlock System Scaffolding is made of Q235 Steel, a type of carbon structural steel known for its high strength and durability. This ensures that the scaffolding can withstand heavy loads and harsh weather conditions, providing a safe and reliable support system for construction workers.

Shipping Origin: China

All our Ringlock System Scaffolding products are manufactured in China, a country known for its expertise in steel production. This guarantees that our scaffolding meets the highest quality standards and is built to last.

Surface Treatment: Hot-dip Galvanized

To ensure maximum durability and longevity, our Ringlock System Scaffolding undergoes a hot-dip galvanization process. This involves coating the scaffolding with a layer of zinc, providing excellent corrosion resistance and protection against rust.

Product Name: Ringlock System

The name says it all - our scaffolding system is built with a unique ringlock design, allowing for easy and secure connections between different components. This innovative design makes the scaffolding highly versatile and adaptable to different construction needs.

Warranty: 2 Years

We are confident in the quality and durability of our Ringlock System Scaffolding, which is why we offer a 2 years warranty for all our products. This gives our customers peace of mind and assurance that they are investing in a reliable and long-lasting support system for their construction projects.

Easy to Assemble

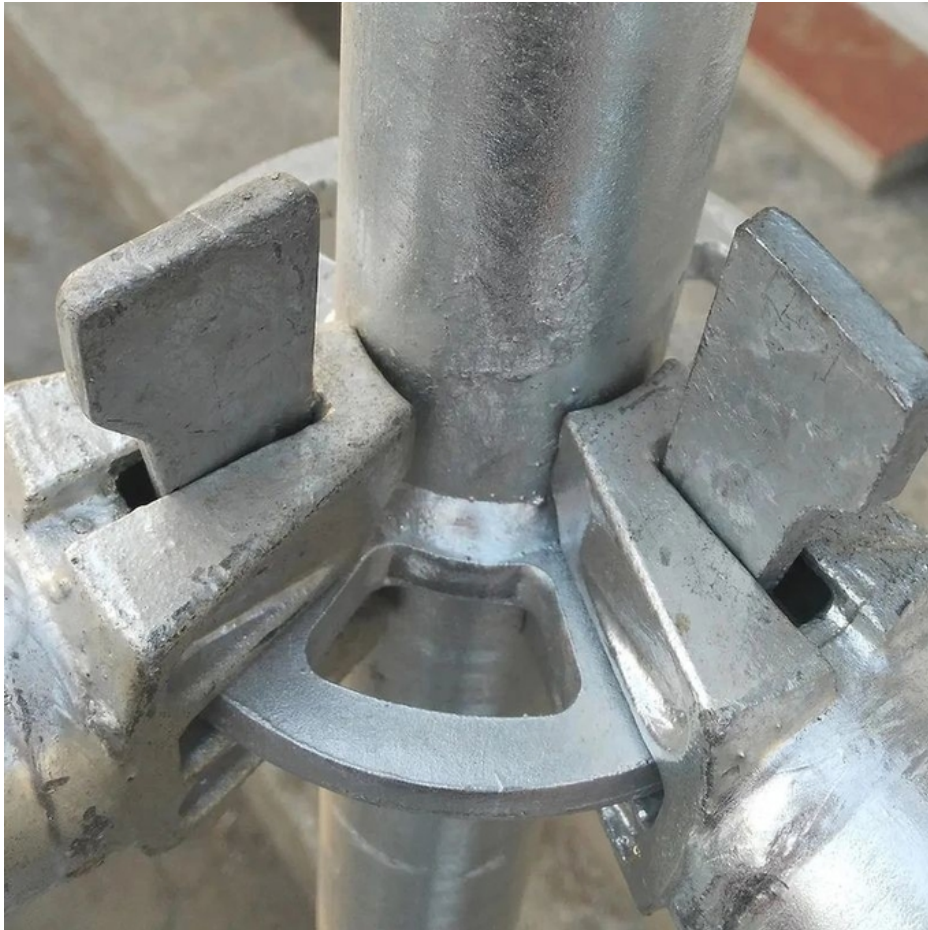
The Ringlock System Scaffolding is designed for easy and quick assembly, allowing construction workers to set up the support system in no time. This not only saves time and labor costs, but also increases efficiency on the construction site.

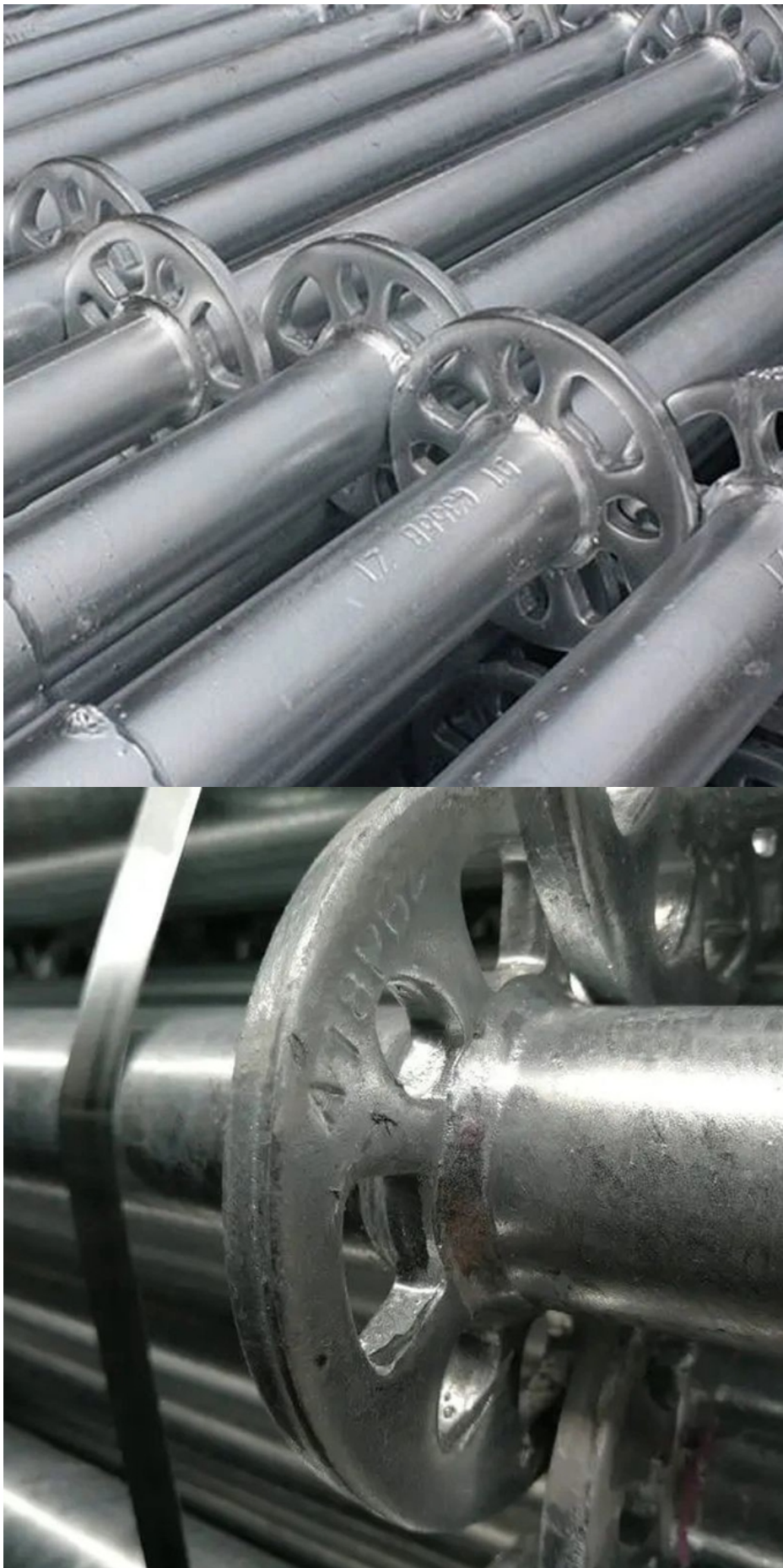
Conclusion

The Ringlock System Scaffolding is the perfect choice for any construction project. Made of high quality Q235 Steel and hot-dip galvanized for durability, it is a safe and reliable support system that is easy to assemble and built to last. With a 2 years warranty and a unique ringlock design, it is the ideal solution for all your construction needs.

Technical Parameters:

Technical Parameters	Value
Product Name	Ringlock System
Warranty	2 Years
Application Scenarios	Architecture
Material	Q235 Steel
Surface Treatment	Hot-dip Galvanized
Shipping Origin	China
Product Features	Ringlock Scaffold Connector, Scaffolding Ring Lock, Ringlock System





Applications:

Ringlock System Scaffolding - Bythai
Brand Name: Bythai
Place of Origin: China
Delivery Time: 10-15 Days
Product Name: Ringlock System
Surface Treatment: Hot-dip Galvanized

Material: Q235 Steel
Warranty: 2 Years
Shipping Origin: China
Introduction

Ringlock System Scaffolding, also known as Quick Assembly Scaffold Rings, is a versatile support system used in construction and industrial applications. This product is designed and manufactured by Bythai in China, and it is known for its durability, safety, and high load capacity.

Applications

Ringlock System Scaffolding is commonly used in various construction and industrial projects, including but not limited to:

Building Construction

Bridge construction

Tunnel construction

Mining operations

Shipbuilding

Power plants

Oil and gas refineries

Industrial maintenance and repair

Event and concert staging

And many more

Customization:

Bythai Ringlock System Scaffolding Customization Services

Brand Name: Bythai
Place of Origin: China
Delivery Time: 10-15 Days
Surface Treatment: Hot-dip Galvanized
Warranty: 2 Years
Product Name: Ringlock System
Application Scenarios: Architecture
Material: Q235 Steel

At Bythai, we understand that every construction project is unique and requires a scaffolding system that is tailored to its specific needs. That's why we offer customizable solutions for our reliable Ringlock System Scaffolding, designed and manufactured in China with the highest quality materials.

Our customizable services include hot dip galvanized ringlock components and accessories, ensuring maximum durability and protection against corrosion. With a delivery time of 10-15 days, we are committed to providing timely and efficient solutions for your project.

As a leading manufacturer of scaffolding systems, we take pride in our brand and the quality of our products. Our Ringlock System is made from Q235 steel, known for its strength and durability, making it suitable for various application scenarios, especially in the field of architecture.

Choose Bythai for your next construction project and experience the benefits of our customizable services, including hot dip galvanized ringlock components, a reliable Ringlock System, and a 2-year warranty. Contact us today to learn more about our customizable solutions.

Support and Services:

Technical Support and Services for Ringlock System Scaffolding

The Ringlock System Scaffolding is a highly versatile and efficient scaffolding solution that has been widely used in various construction projects around the world. With its innovative design and high-quality materials, it provides a safe and stable platform for construction workers to perform their tasks at different heights.

Technical Support

Our team of experienced engineers and technicians are dedicated to providing comprehensive technical support for the Ringlock System Scaffolding. We are committed to ensuring that our customers have a smooth and trouble-free experience with our product. Our technical support services include:

Professional consultation and advice on the selection and installation of the scaffolding system

Customized design and engineering solutions to meet specific project requirements

On-site guidance and training for proper assembly and dismantling of the scaffolding

Regular maintenance and inspection to ensure the safety and stability of the scaffolding

24/7 technical support hotline for any inquiries or issues

Services

In addition to technical support, we also offer a range of services to further enhance the performance and efficiency of the Ringlock System Scaffolding:

Rental and sales of the scaffolding system

Delivery and logistics services to ensure timely and convenient delivery

On-site installation and dismantling services

Customized scaffolding solutions for unique project requirements

Training and certification programs for construction workers

At Ringlock System Scaffolding, we are committed to providing the best technical support and services to our customers. Our goal is to ensure that your construction projects are completed safely, efficiently, and on time. Contact us today to learn more about our products and services.

FAQ:

Q: What is Ringlock System Scaffolding?

A: Ringlock System Scaffolding is a type of scaffolding system that uses a modular design with vertical standards, horizontals,

diagonal braces, and base collars to create a strong and stable platform for construction or maintenance work.

Q: What is the advantage of using Ringlock System Scaffolding?

A: Ringlock System Scaffolding is known for its versatility and ease of assembly, making it a popular choice for construction projects of all sizes. It is also highly durable and can withstand heavy loads, providing a safe working environment for workers.

Q: Where is Bythai Ringlock System Scaffolding manufactured?

A: Bythai Ringlock System Scaffolding is manufactured in China.

Q: What is the delivery time for Bythai Ringlock System Scaffolding?

A: The delivery time for Bythai Ringlock System Scaffolding is usually 10-15 days, depending on the quantity ordered and the shipping location.

Q: What are the payment terms for Bythai Ringlock System Scaffolding?

A: Bythai Ringlock System Scaffolding accepts T/T (Telegraphic Transfer) and L/C (Letter of Credit) as payment terms.



Bythai Scaffolding Co.,Ltd



17300780862



info@bythaiscaffolding.com



bythaiscaffold.com

No. 605,Industrail Exchange Center ,Huanghai Town Changsha Hunan China