

Hot Dip Galvanized 1219x1524mm Walk Through Frame System

Our Product Introduction

for more products please visit us on bythaiscaffold.com

Basic Information

- Place of Origin: China
- Brand Name: Bythai
- Model Number: BT04

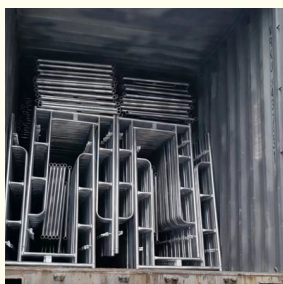


Product Specification

- Stability: High
- Surface Treatment: Powder Coating
- Easy Installation: Yes
- Cost-effectiveness: Yes
- Color: Steel, Painted Color
- Size: Customized
- Durability: High
- Easy Dismantling: Yes
- Highlight: 1219x1524mm frame system,
1219x1524mm walk through frame system,
Galvanized Walk Through Frame System



More Images



Product Description

Product Description:

Frame System Scaffolding is a high-quality h frame scaffolding system that offers excellent flexibility and durability. It is surface-treated with powder coating to ensure maximum corrosion resistance and aesthetic appeal. It is easy to install and can be customized to fit different sizes. This h frame scaffolding system is ideal for construction, renovation, and maintenance projects due to its high flexibility and durability. It is designed to meet the safety standards of the scaffolding industry and is the perfect choice for any professional or DIYer looking for a reliable and robust scaffolding frame system.

Features:

Product Name: Frame System Scaffolding

Reusability: Yes

Surface Treatment: Powder Coating

Easy Dismantling: Yes

Material: Steel

Easy Installation: Yes

Features: Walk Through Scaffold System, Frame Scaffolding System, Ladder Frame Scaffolding

Technical Parameters:

Attribute	Characteristic
Surface Treatment	Powder Coating
Cost-effectiveness	Yes
Stability	High
Material	Steel
Reusability	Yes
Easy Dismantling	Yes
Size	Customized
Easy Installation	Yes
Flexibility	High
Safety	High

Applications:

Bythai BT04 Frame System Scaffolding

The Bythai BT04 Frame System Scaffolding is designed for use in a variety of construction and renovation projects. It offers high flexibility and stability, and easy installation. The frame system scaffolding can be used both indoors and outdoors, in any weather conditions. The surface treatment of the product is powder coating, available in steel or painted color.

The Bythai BT04 Frame System Scaffolding is ideal for any building or renovation project, providing a secure and reliable way to construct a structure. The product is designed for maximum safety and stability, with an easy and quick assembly. The Frame System Scaffolding is flexible and can be used for multiple applications, such as constructing bridges, scaffolding, ladders, and other structures. The Bythai BT04 Frame System Scaffolding is designed to be safe and reliable in any environment, with an easy and quick installation. Its flexibility and stability make it ideal for any construction project, and the powder coating ensures maximum durability. The Frame System Scaffolding is available in steel or painted color, and is designed for long-lasting use.

The Bythai BT04 Frame System Scaffolding is a great choice for any building or renovation project, providing a secure and reliable way to construct a structure. With its high flexibility and stability, easy installation, and powder coating, the Frame System Scaffolding is a great choice for any construction project.

Customization:

Bythai BT04 Scaffold Mobile Frame System

Features:

Place of Origin: China

Material: Steel

Cost-effectiveness: Yes

Flexibility: High

Reusability: Yes

Load Capacity: High

Bythai BT04 Scaffold Mobile Frame System is the perfect scaffolding system for construction needs. Its steel material ensures durability and cost-effectiveness. It is highly flexible, reusable, and has a high load capacity.

Support and Services:

Frame System Scaffolding Technical Support and Service

We provide technical support and services for Frame System Scaffolding. Our knowledgeable staff is available to help with any technical issues or questions you may have about the product. Our support team is highly trained in the use of Frame System Scaffolding, and can provide you with detailed instructions and advice on how to properly and safely use the product.

We also offer troubleshooting services for any technical issues you may be experiencing with Frame System Scaffolding. Our technicians are available to quickly and accurately diagnose and repair any technical issues you may encounter. We strive to provide the highest level of customer service and satisfaction to ensure that your Frame System Scaffolding experience is a positive one.

If you have any questions or need any assistance with Frame System Scaffolding, please do not hesitate to contact us. We are here to help!

Packing and Shipping:

Packaging and Shipping

Frame System Scaffolding product comes packaged and shipped in a sturdy cardboard box with all the necessary components. The box contains the parts of the frame system, instructions for assembling the frame, and additional tools necessary for assembly. Additionally, the box has been designed to protect the product during shipping and ensure safe delivery.

FAQ:

Q: What is Frame System Scaffolding?

A: Frame System Scaffolding is a type of scaffolding system manufactured by Bythai with model number BT04 and origin in China.

Q: What materials are used to make Frame System Scaffolding?

A: Frame System Scaffolding is made of high-grade Q235 steel and aluminum alloy.

Q: What components does Frame System Scaffolding include?

A: Frame System Scaffolding consists of horizontal frames, diagonal braces, guardrails, steel ladders, and so on.

Q: What is the weight capacity of Frame System Scaffolding?

A: Frame System Scaffolding has a load-bearing capacity of up to 200kg per square meter.

Q: How many sizes are available for Frame System Scaffolding?

A: Frame System Scaffolding comes in a variety of sizes to meet different needs, ranging from 2.5 meters to 4 meters.



Bythai Scaffolding Co.,Ltd



17300780862



info@bythaiscaffolding.com



bythaiscaffold.com

No. 605,Industrail Exchange Center ,Huanghua Town Changsha Hunan China