

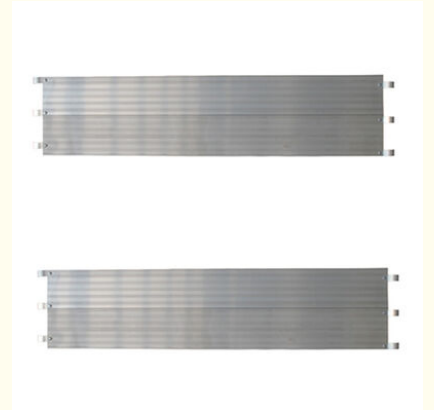
2026 Construction Companies Scaffolding System Aluminum Plank Construction Companies

Our Product Introduction

for more products please visit us on bythaiscaffold.com

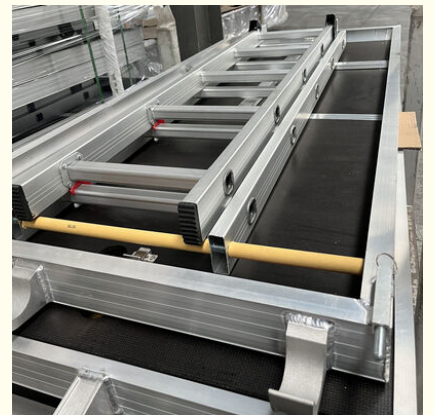
Basic Information

- Place of Origin: China
- Brand Name: bythai
- Certification: SGS
- Model Number: BS204
- Minimum Order Quantity: 100
- Price: 4.5-8.5
- Packaging Details: container
- Delivery Time: 10-15
- Payment Terms: TT/TC



Product Specification

- Features: High Strength, Easy To Assemble, Versatile, Durable, Corrosion Resistant, Lightweight, Cost-effective, Flexible, Safe, Stable, Efficient, Environmentally Friendly, Interchangeable, Adjustable, Multi-functional
- Oem: Available
- Packing: Container
- Type: Planks
- Usage: Construction, Maintenance, Repair
- Application: Scaffolding System
- Size: Various Sizes Available
- Highlight: **Construction Scaffolding System Aluminum Plank**
, Scaffolding System Aluminum Plank,
Lightweight Aluminium Scaffolding Plank



Product Description:

Aluminum planks: The Ultimate Scaffolding Solution

Our Aluminum planks is the go-to choice for scaffolding needs. It is a versatile and highly efficient system that offers high performance and durability. With its lightweight design and easy assembly, it is perfect for a wide range of applications in the construction industry. Application: Scaffolding System

Our Aluminum planks is specifically designed for scaffolding purposes. It is suitable for both industrial and commercial projects, making it the ideal choice for construction companies, contractors, and builders.

Components: Aluminum Ringlock Standard, Aluminum Ringlock Ledger

The Aluminum planks consists of two main components - the Aluminum Ringlock Standard and the Aluminum Ringlock Ledger. These components are made from high-grade aluminum, ensuring strength and stability for all scaffolding needs.

Standard: EN12810, AS/NZS 1576, ANSI/SSFI SC100-5/05,

Oem: Available

We offer OEM services for our Aluminum planks. This means that you can customize the product according to your specific needs, including size, color, and packaging.

Packing: Container

Lightweight and easy to assemble

Durable and long-lasting

Versatile for a wide range of applications

Time-saving solution for construction projects

Offers a safe working environment

Technical Parameters:

Attribute	Value
Size	Various Sizes Available
Standard	EN12810, AS/NZS 1576, ANSI/SSFI SC100-5/05, BS1139
Features	High Strength, Easy To Assemble, Versatile, Durable, Corrosion Resistant, Lightweight, Cost-effective, Flexible, Safe, Stable, Efficient, Environmentally Friendly, Interchangeable, Adjustable, Multi-functional
Type	planks
Material	Aluminum
OEM	Available
Application	Scaffolding System
origin	China
Usage	Construction, Maintenance, Repair
Packing	Container
Key Features	
Plank Accessories	High Performance
Plank Accessories	High Performance



Applications:

Brand Name: bythai

Model Number: BS204

Place of Origin: China

Certification: SGS

Minimum Order Quantity: 100

Price: 4.5-8.5

Packaging Details: container

Delivery Time: 10-15

Payment Terms: TT/TC

Material: Aluminum

Usage: Construction, Maintenance, Repair

Size: Various Sizes Available

Features:

Easy installation

Plank accessories

Corrosion-resistant

High load capacity

Cost-effective

Adaptability

Versatility

Stable and safe

Customization:

Brand Name: bythai

Model Number: BS204

Place of Origin: China

Certification: SGS

Minimum Order Quantity: 100

Price: 4.5-8.5

Packaging Details: container

Delivery Time: 10-15

Payment Terms: TT/TC

Size: Various Sizes Available

Usage: Construction, Maintenance, Repair

Material: Aluminum

Application: Scaffolding System

Packing: Container

Weather-resistant

Packing and Shipping:

The Aluminum Ringlock System is packaged and shipped to ensure safe and efficient delivery to our customers. Our packaging is designed to protect the components of the system from damage during transportation and storage.

Packaging:


The main components of the Aluminum Ringlock System, such as the standard, ledger, diagonal brace, and base jack, are bundled together and packed in strong and durable wooden crates.

The smaller components, such as the pins and spigots, are packed in separate boxes and placed inside the wooden crates.

All packaging materials used are high-quality and designed to withstand the rigors of transportation.



Bythai Scaffolding Co.,Ltd

 17300780862

 info@bythaiscaffolding.com

 bythaiscaffold.com

No. 605,Industrail Exchange Center ,Huanghua Town Changsha Hunan China