

150kg Load Capacity Scaffolding Mounting Ladders Step Width 50cm

Our Product Introduction

for more products please visit us on bythaiscaffold.com

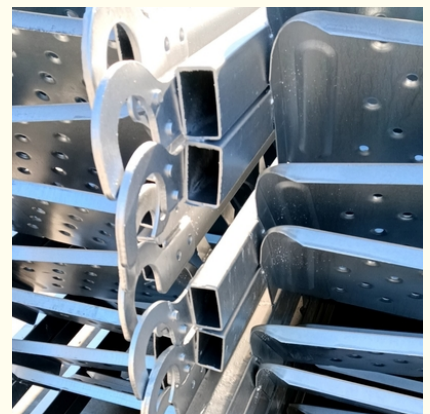
Basic Information

- Place of Origin: china tianjin
- Brand Name: bythai
- Model Number: BM224
- Minimum Order Quantity: 1000
- Packaging Details: container
- Delivery Time: 10-25



Product Specification

- Load Capacity: 150kg
- Surface Treatment: HDG
- Color: Silver
- Warranty: 2 Years
- Step Height: 30cm
- Material: Aluminum/HDG
- Size: 3m
- Step Width: 50cm
- Highlight: **150kg Capacity Scaffolding Mounting Ladders, Width 50cm Scaffolding Mounting Ladders**



Product Description

Product Description:

Scaffolding Step Ladders

If you need a reliable, sturdy aluminum ladder, look no further than our Scaffolding Step Ladders. With a 2-year warranty, these ladders are designed to last. Step Width is 50cm and Step Height is 30cm, and the ladders come in Silver with a HDG Surface Treatment. With excellent craftsmanship and top-of-the-line materials, you can count on our Scaffolding Step Ladders for years of reliable use.

Place of Origin	china tianjin
Brand Name	bythai
Model Number	BM224
Minimum Order Quantity	1000
Packaging Details	container
Delivery Time	10 25

Applications:

bythai BM224 Scaffolding Ladders

bythai's BM224 Scaffolding Ladders are the perfect solution for completing any construction or repair works. With its no-hook design, it is easy to set up and take down, making it a practical and efficient option for any project. This ladder features a 3m size, 50cm step width, 30cm step height and is available in a silver color. It is also very durable and comes with a two-year warranty. It can be shipped in containers and the minimum order quantity for this product is 1000.

This Scaffolding Folding Ladder is the ideal tool for any project. It is great for scaffolding props or any other construction need. The no-hook design makes it easy to set up and take down, and the durable construction ensures years of use. Whether it's for home repairs or commercial projects, the bythai BM224 Scaffolding Ladder is the perfect solution.







Packing and Shipping:

Packaging and Shipping for Scaffolding Ladders

Scaffolding ladders should be packaged and shipped with care. The following is a list of guidelines for packaging and shipping of scaffolding ladders:

The ladder should be secured with packaging material such as bubble wrap or packing foam.

The ladder should be placed in a box or container that is large enough to ensure that it will not be damaged during shipping.

The box or container should be sealed securely to prevent any damage during transit.

The ladder should be labeled clearly with the sender and recipient's information.

The box or container should be marked with "FRAGILE" or "HANDLE WITH CARE" to alert shippers of the contents.

The box or container should be placed on a pallet or skid and shrink-wrapped to ensure it is secure during transit.



Bythai Scaffolding Co.,Ltd



17300780862



info@bythaiscaffolding.com



bythaiscaffold.com

No. 605,Industrail Exchange Center ,Huanghua Town Changsha Hunan China