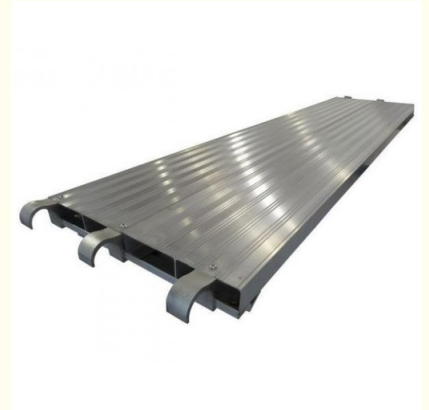


## Aluminium Scaffolding Plank The Top-Notch Choice for Durable and Safe Construction

### Our Product Introduction

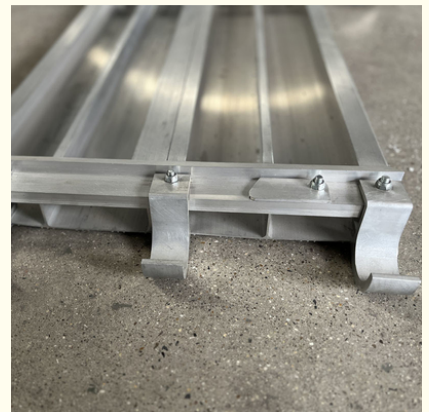
#### Basic Information

- Place of Origin: China
- Brand Name: bythai
- Certification: SGS ISO
- Model Number: BT203
- Minimum Order Quantity: 1000
- Price: 4.5-8.5
- Packaging Details: container
- Delivery Time: 10-15
- Payment Terms: L/C, T/T



#### Product Specification

- Application: Scaffolding System
- Color: Silver
- Durable: Yes
- Easy To Assemble: Yes
- Material: Aluminium
- Origin: China
- Packing: Container
- Safe: Yes
- Size: Various Sizes Available
- Surface Treatment: Anodized
- Type: Planks
- Versatile: Yes
- Highlight: **Construction Aluminium Scaffolding Plank,  
Anti Corrosion Aluminium Scaffolding Plank,  
Adjustable Aluminum Walk Boards**



## Aluminium Product

Features and advantages:

**Lightweight and durable:** The scaffolding aluminum pedals are made of high-quality aluminum alloy materials, which are lightweight and easy to carry and install. At the same time, aluminum alloy has excellent corrosion resistance and durability, and can be used in various environments for a long time without rusting or deforming easily.

**Safe and stable:** The reasonably designed structure and stable support system ensure the stability and safety of the pedal during use, effectively preventing workers from accidentally falling or sliding when working at heights.

**Easy to clean and maintain:** The surface of the aluminum pedal is smooth and flat, and it is not easy to adhere to dust and dirt. It is easy to clean and maintain, keeping the working environment tidy.

**Various specification options:** According to different engineering needs, scaffolding aluminum pedals provide a variety of specifications and size options, which can meet the construction requirements of different heights and working areas.

**Environmental protection and energy saving:** Aluminum alloy materials are recyclable, have good environmental performance, and are in line with the concept of modern sustainable development.

Applicable scene:

**Construction:** Used for the construction and maintenance of scaffolding at construction sites to provide a stable working platform to facilitate construction workers working at heights.

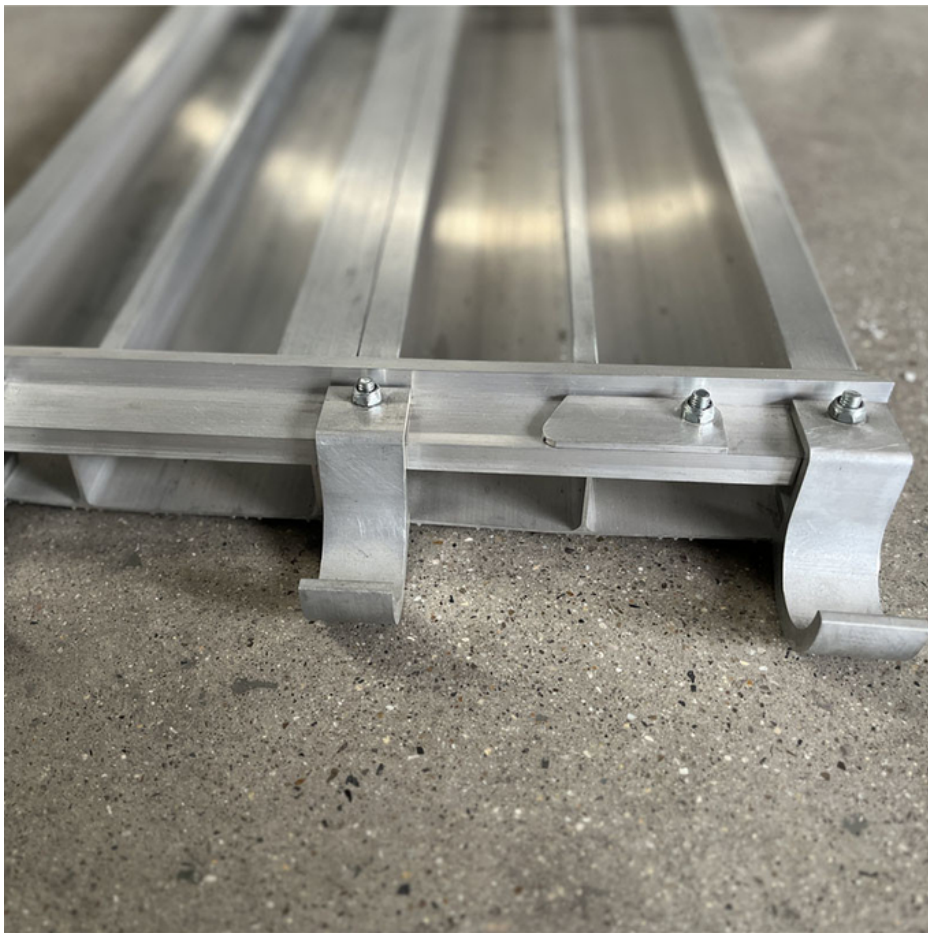
**Decoration:** In indoor and outdoor decoration projects, the pedals serve as a support platform for decoration workers to perform wall painting, ceramic tile laying and other operations.

**Maintenance:** Used for the maintenance and cleaning of high-altitude facilities such as buildings, bridges, billboards, etc., to provide a safe and reliable operating platform for maintenance personnel.

**Activity stage:** In performances, activities and other occasions, the scaffolding aluminum pedal can be used as a temporary stage to carry actors or objects and provide a stable performance venue.

Steel plank							
types	width	Height	Thickness	length	surfacc	Material	Standard
210	210	45	1.2	500-4000	Pre-Galvanized	Q195 steel	EN12811 BS1139
240	240	45	1.2				
250	250	50	1.2				
225	225	38	1.5				





**Bythai Scaffolding Co.,Ltd**



17300780862



info@bythaiscaffolding.com



bythaiscaffold.com

