

Scaffolding High Standard Base Jack Scaffolding For Heavy Duty Applications

Our Product Introduction

for more products please visit us on bythaiscaffold.com

Basic Information

- Place of Origin: China
- Brand Name: bythai
- Certification: SGS,ISO
- Model Number: BT208
- Minimum Order Quantity: 1000
- Price: 4.5-8.5
- Packaging Details: container
- Delivery Time: 10-15
- Payment Terms: L/C, T/T



Product Specification

- Features: Easy To Install, Durable, Corrosion-resistant
- Application: Construction
- Color: Silver
- Corrosion Resistance: Yes
- Durability: High
- Material: Steel
- Package: Pallet Or As Per Customer's Requirement
- Standard: EN74
- Type: Adjustable
- Usage: Supporting Scaffold Structures
- Warranty: 2 Year
- Highlight: **High Standard Base Jack Scaffolding,
EN74 Base Jack Scaffolding,
Adjustable Base Jack Scaffolding**



Product Description

Scaffolding Screw Jack

Product Description:

Product Name	Solid Base Jack
Brand Name	Bythai
Size	34*600mm, 120*120*5mm
Material	Q235
Surface Treatment	Electro-galvanized
Weight	4.4 kg
Packing	Small woven bag and ton bag, wooden pallet, wooden case, iron pallet , stretch film or as your requirement.
Application	Heavy Industry, General Industry, Scaffolding system

The scaffolding screw jack base is a key component used to support the scaffolding system. It is designed to provide solid support and load-bearing functions to ensure the safety and stability of the scaffolding during the construction process. The base is made of high-strength materials and precision-machined to provide reliable load-bearing capacity and excellent durability.

Features:

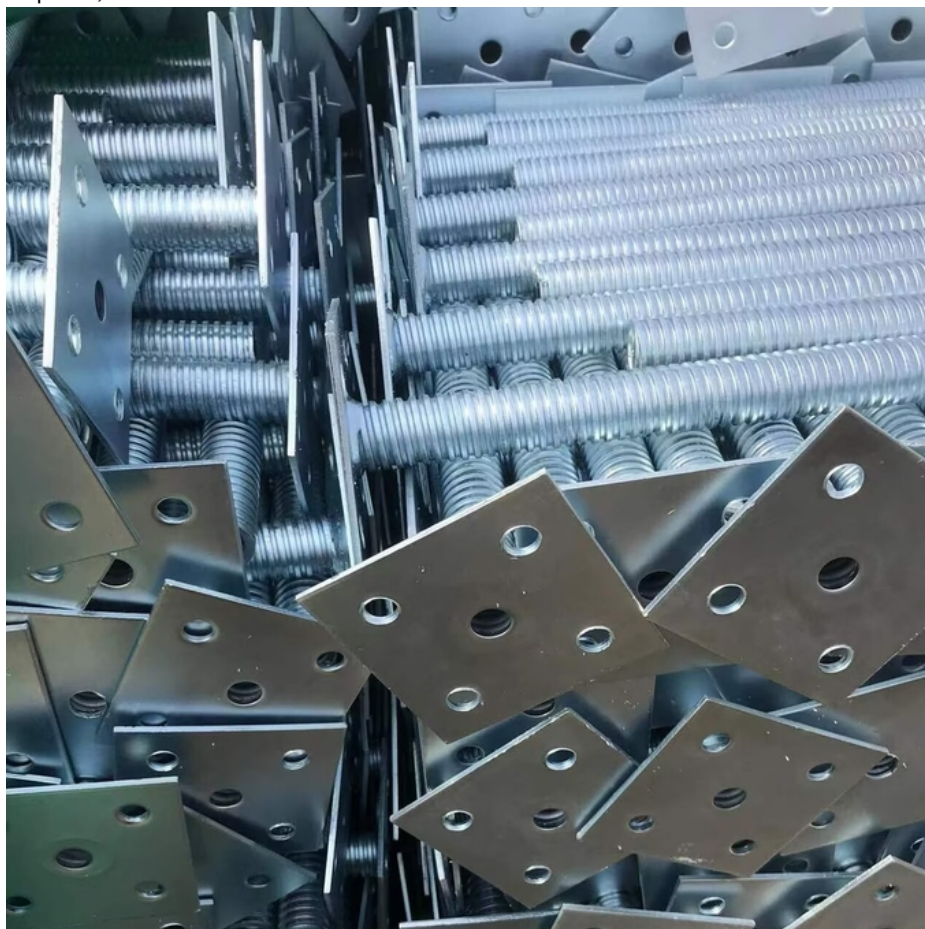
High-strength material: The base is made of high-quality steel material, with a strong structure and can withstand a large amount of weight and pressure, ensuring the stability and safety of the scaffolding system.

Thousands of kilograms of load-bearing: Reasonable design, strong base load-bearing capacity, each base can bear thousands of kilograms of weight, ensuring the stability and safety of the scaffolding system during construction.

Adjustable height: The base design is adjustable to adapt to different heights and uneven ground conditions, ensuring that the scaffolding system can be firmly supported in any environment.

Anti-slip design: The bottom of the base adopts an anti-slip design to increase friction with the ground, improve the stability of the base, and reduce the risk of accidental sliding.

Easy to install: The design is simple, and the installation is convenient and fast. No professional tools are required, which can save construction time and labor costs.





Bythai Scaffolding Co.,Ltd



17300780862



info@bythaiscaffolding.com



bythaiscaffold.com

No. 605,Industrail Exchange Center ,Huanghua Town Changsha Hunan China