

Q235 Galvanized Adjustable Base Jack Scaffolding for Disc System and Support System

Our Product Introduction

for more products please visit us on bythaiscaffold.com

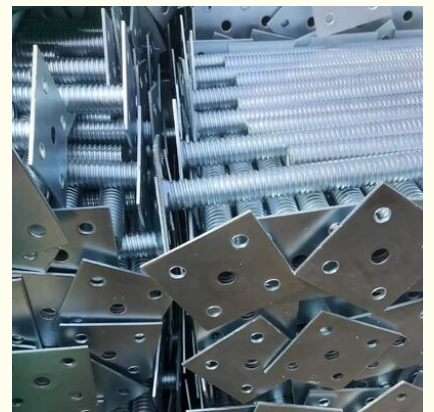
Basic Information

- Place of Origin: China
- Brand Name: bythai
- Certification: SGS,ISO
- Model Number: BT207
- Minimum Order Quantity: 1000
- Price: 4.5-9.5
- Packaging Details: container
- Delivery Time: 10-15
- Payment Terms: L/C, T/T



Product Specification

- Application: Construction
- Color: Silver
- Corrosion Resistance: Yes
- Durability: High
- Material: Steel
- Packing: Container
- Safety Features: Yes
- Surface Treatment: Hot-dip Galvanized
- Type: Scaffolding System



More Images



U head

Product Details

Name	Type	Size(mm)		Surface
Adjustable Base Jack	Solid	Screw rod	Base Plate	Painted Electro-Galvanized
		30*600	150*120*50*4	
		32*600	150*120*50*4	
		34*600	150*120*50*4	

Scaffolding screw jack

Our screw products are mainly composed of three parts: screw, base plate and nut, which play an important role in the door frame system, shelf tube system, disc system and support system. We offer a variety of specifications and surface treatments to meet different customer needs.

Screw type:

Solid lead screw: Solid lead screw is suitable for gantry systems to provide stable support and load-bearing capacity, ensuring that the scaffolding structure is strong.

Hollow screws: Hollow screws are often used in rack tube systems, disc systems, and support systems to reduce weight, improve portability, and meet specific needs.

Surface treatment process:

Based on customer needs, we provide a variety of surface treatment processes, including:

Galvanized: Provides excellent corrosion resistance and is suitable for a variety of environmental conditions.

Pre-galvanized: Features an even coating of zinc, providing longer life and appearance.

Hot Dip Galvanizing: Provides the highest level of corrosion resistance and is suitable for projects in harsh environments.

Applicable fields:

Our scaffolding screws are widely used in the following areas:

Gantry system: Use solid screw rods to ensure the stability and safety of the scaffolding.

Shelf tube systems: Hollow screws are suitable for lightweight scaffolding structures such as shelf tube systems.

Disc system: Hollow screw used to provide support and connection to ensure the reliability of the disc system.

Support system: The hollow screw rod provides strong support in the support system to meet different engineering needs.

Quality Standards and Certifications:

Our scaffolding steel supports meet the highest quality standards in the industry and have obtained relevant quality certifications, providing customers with confidence and assurance.





Packaging and delivery:

Products come in sturdy packaging to ensure safe delivery. We offer a variety of delivery options to suit our customers' needs and provide flexibility in delivery times.

Marketing:

Our products are widely exported to the Middle East, America, Africa and other markets. With years of technological innovation and quality management, we have won the trust and praise of global customers.



Bythai Scaffolding Co.,Ltd



17300780862



info@bythaiscaffolding.com



bythaiscaffold.com

No. 605,Industrail Exchange Center ,Huanghua Town Changsha Hunan China